

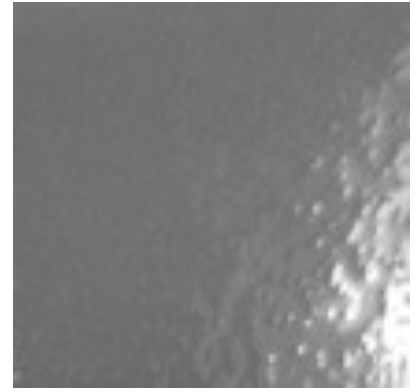
# Custom Range Hood Metal Finishes



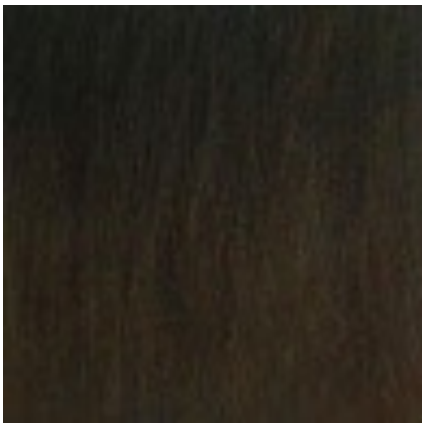
#4 304 Brushed Stainless steel or polished



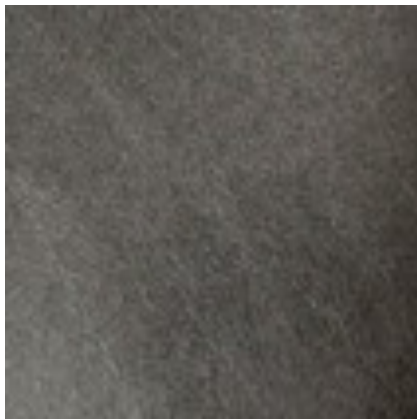
Jitterbug Stainless steel



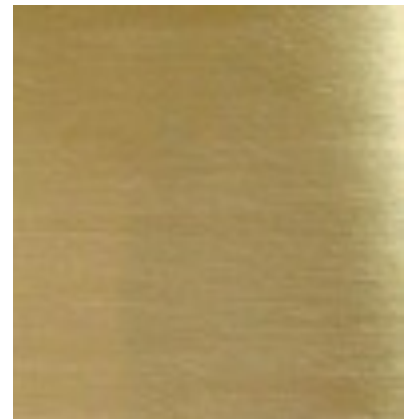
Hammered Brushed Stainless steel



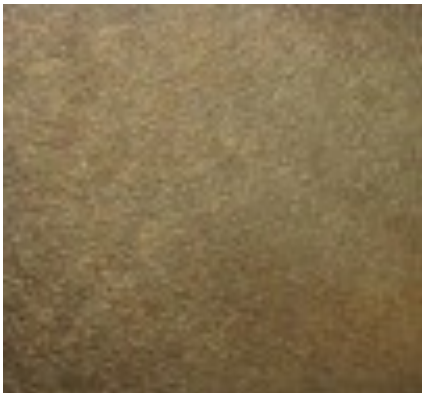
Oil Rubbed Bronze smooth or hammered



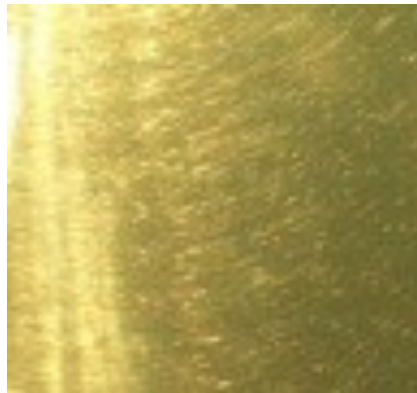
Blackened Steel



Brushed Brass



Antiqued Brass



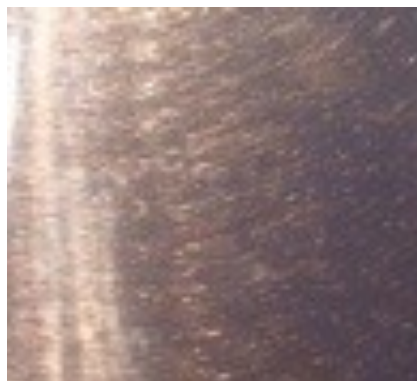
Polished Brass



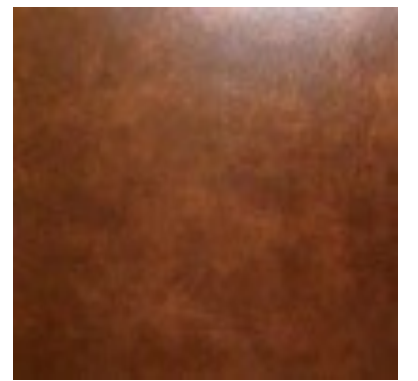
Brushed Copper



Antiqued Copper



Polished Copper



Rustic Copper

[Click here to request a sample metal finish and include a mailing address as well as the finish you require.](#)